

AIR OPERATED DOUBLE DIAPHRAGM PUMPS (AODD PUMPS)

We are a producer and supplier company of different types of Industrial Pumps. We offer AODD Pumps in a wide range. These pumps are made of stainless steel SS-316/ Aluminium / PP / and PVDF



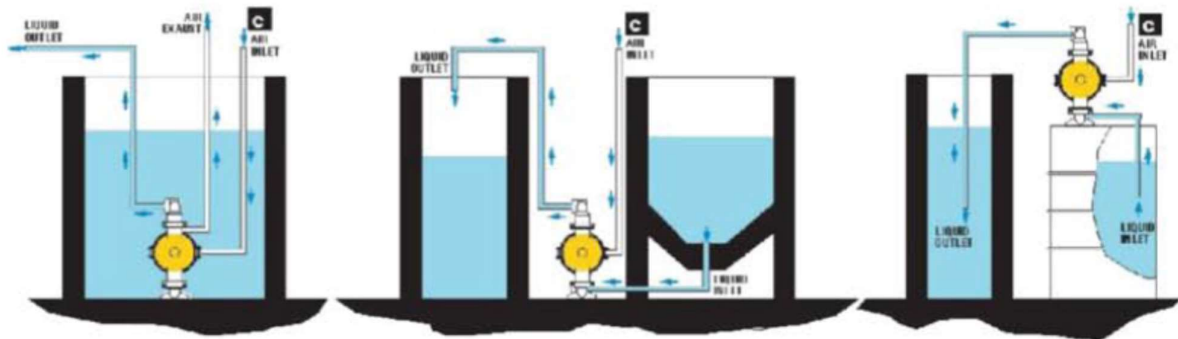
FEATURE:

- No Electrical Motor drive is required so its free of electrical hazards
- No mechanical seal or any gland packing is required so the problems of leakages can be avoided
- The pump can run Dry also without getting any damage
- Its quite safe using in Explosive or Hazardous environments
- Its flow can be easily regulated by varying its operating air flow
- It can function self priming from starting even dry
- Pressure up to 7 Bar (100psi) can be achieved
- Gentle action and non shearing
- Quickly it can assemble and disassemble
- Powder form or viscous fluid form can be handled successfully
- Easily movable and also can be installed on a trolley for its easy movements

M O C AVAILABLE OPTIONS :

- Investment Casting CF8M (SS – 316)
- Poly Propylene (PP)
- Aluminum
- Poly Vinyl Dene Fluoride (PVDF)

: INSTALLTION VERSATILITY :



SUBMERGED

POSITIVE SUCTION

SELF PRIMING

APPLICATION :

- ACIDS
- SOLVENTS
- CAUSTICS
- HIGH VISCOUS LIQUIDS
- ABRASIVE MEDIA
- HAZARDOUS AND INFLAMABLE LIQUIDS



Max Flow Rate : 40Lpm
Port Size : Inlet : 12.70mm (½" BSP)
Discharge : 12.70mm (½" BSP)
Air Inlet : 6.85mm (¼" BSP)
Air Exhaust : 12.70mm (½" BSP)
Suction Lift : Dry : 1.45m (4.75')
Wet : 2.83m (9.28')
Teflon : Dry : 0.50m (1.64')
Wet : 0.90m (2.95')
Max Particle Size (Dia) : 2mm (0.078")

❖ **Best suitable for Barrel loading-unloading.**

Max Flow Rate : 135Lpm
Port Size : Inlet : 25.40mm (1" BSP)
Discharge : 25.40mm (1" BSP)
Air Inlet : 9.53mm (3/8" BSP)
Air Exhaust : 12.70mm (½" BSP)
Suction Lift : Dry : 3.05m (10')
Wet : 4.89m (16')
Teflon : Dry : 2.14m (7')
Wet : 3.98m (13')
Max Particle Size (Dia) : 3.17mm (0.125")



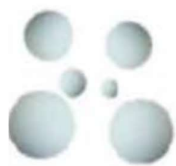
Max Flow Rate : 270Lpm
Port Size : Inlet : 38.10mm (1½" BSP)
Discharge : 38.10mm (1½" BSP)
Air Inlet : 9.64mm (3/8" BSP)
Air Exhaust : 12.70mm (½" BSP)
Suction Lift : Dry : 4.57m (15')
Wet : 7.62m (25')
Teflon : Dry : 3.05m (10')
Wet : 6.09m (20')
Max Particle Size (Dia) : 4.76mm (0.188")

❖ **Best suitable for Filter Press & Transfer.**

Max Flow Rate : 586Lpm
Port Size : Inlet : 50.80mm (2" BSP)
 Discharge : 50.80mm (2" BSP)
 Air Inlet : 12.70mm (1/2" BSP)
 Air Exhaust : 19.05mm (3/4" BSP)
Suction Lift : Dry : 4.57m (15')
 Wet : 7.60m (25')
Teflon : Dry : 3.05m (10')
 Wet : 6.09m (20')
Max Particle Size (Dia) : 6.35mm (0.250")



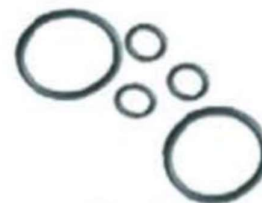
PUMP PARTS :



PTFE BALL



PTFE GASKET



'O' RING



AIR VALVE ASSEMBLY SET



PTFE & RUBBER DIAPHRAGM



<<< ***** >>>